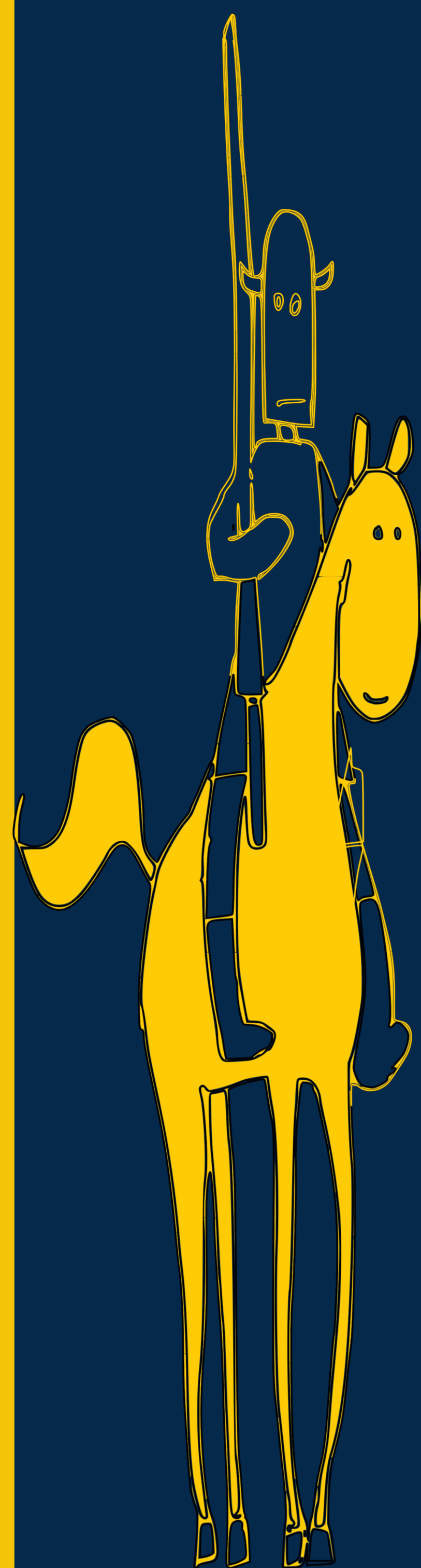


University of Michigan



Samvera
Projects



Middle English Dictionary

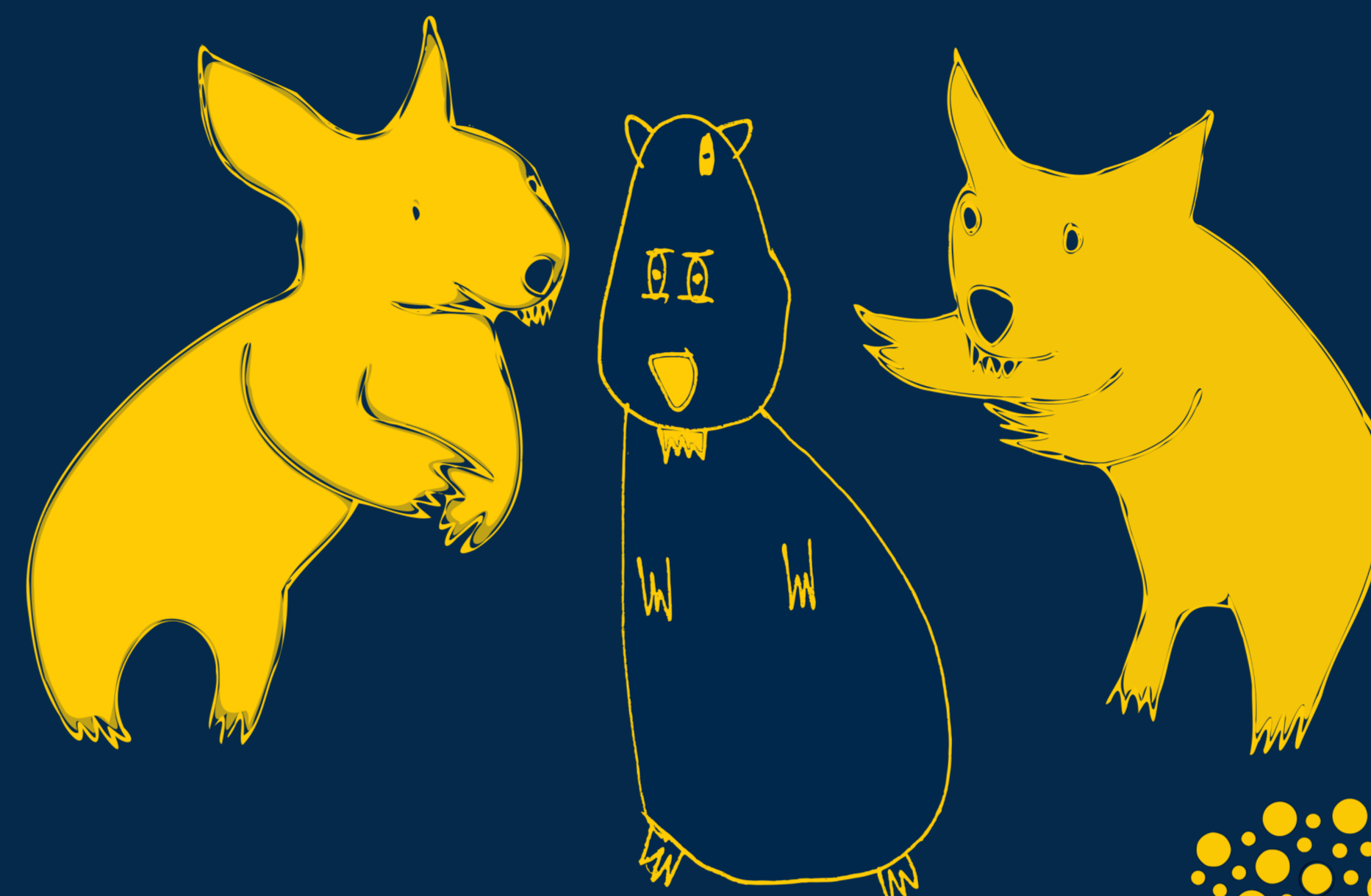
The new Middle English Dictionary revises the original online version created in 2000 which was itself the digital version of over 15,000 pages published by the University of Michigan Press from 1951 to 2001. The new MED uses Blacklight for searching its over 55,000 entries.



quod.lib.umich.edu/m/middle-english-dictionary

ObjectClass

Michigan Library has run its DLXS platform which has been delivering text (monographs and journals), images, finding aids and bibliographic resources to patrons since the late 1990's. Object Class is a reimagining of this platform that will use modern tools and processes including IIF, BagIt and various parts of the Samvera ecosystem.



"Querulous Wombat"



fulcrum

Fulcrum is a Hyrax-based platform for publishers that emphasizes flexibility, durability, discoverability and accessibility. Currently Fulcrum consists of 17 partner presses. It hosts and delivers multimedia content such as images via IIF and the Leaflet viewer as well as video and audio content using Able Player. Fulcrum also hosts thousands of ebooks and pdfs which can be read online through the integrated Cozy Sun Bear reader.

fulcrum.org



Digital Bentley

The Digital Bentley is a collection of newspaper archives. Scanned page images are delivered through IIF and are viewable in an OpenSeadragon interface customized for accessibility. Corresponding OCR is searchable through Blacklight; coordinate OCR supports search highlights shown on the image viewer.

The digital archive of **The Michigan Daily** student newspaper carries issues from the years 1890 to 2014 consisting of 25,514 issues and over 200,000 scanned page images.



The digital archive of the Detroit Jewish News carries issues from the Detroit Jewish Chronicle (1916-1951) and the Detroit Jewish News (1941-2018), consisting of over 320,000 page images.

The digital archive of the **Michigan Citizen**, a publication for Michigan's African-American and progressive-minded community, will carry issues from 1978-1994, consisting of over 14,000 page images.



digital.bentley.umich.edu/midaily



Deep Blue

Access to Data and Docs on one platform

Achieving our vision of one application for Deep Blue Data and Docs entails moving Deep Blue Docs from DSpace to Hyrax with Deep Blue Data, currently on Hyrax with Fedora. Deep Blue Data's growing collection contains over 12.8 TB of research data by 155 unique authors. Globus integration allows users to download very large datasets from established endpoints. Deep Blue contains over 400 collections and 120,000 documents.



deepblue.lib.umich.edu



arclight

Arclight is a Blacklight-based archival discovery and access platform. We contributed to the initial MVP work cycle with Stanford in 2017, and contributed to the second community work cycle with Stanford, Duke, Indiana, and Princeton in 2019.

Locally we are collaborating with the Bentley Historical Library, the William L. Clements Library, and the University of Michigan Special Collections Research Center.

