



## Sites of Memory, Acts of Erasure: On the Powers, Meanings and Limitations of the Historical Archive

---

Heidi Aronson Kolk, PhD  
Sam Fox School of Design + Visual Arts  
Washington University in St. Louis  
hkolk@wustl.edu

**SAMVERA CONNECT 2019**

Campbell family residence and Locust Avenue streetscape, circa 1931.  
**Source:** Campbell House Museum Collection



August 2012 photos of Campbell House front doors. **Source:** Campbell House Museum blog.



Circa-1935 photograph of Campbell House facade.  
**Source:** Campbell House Museum Collection.







August 2012 photographs of window and shard of glass. **Source:** Campbell House Museum blog.



Aerial views of St. Louis riverfront before (c. 1930) and after (c. 1955) clearance. **Source:** the Missouri History Museum Collection.



**Left:** The Big Mound in 1852—the largest of 24 mounds in the area (measuring 319 X 158 feet).

**Right:** The end of the Big Mound (located at North Broadway and Mound Street) in 1869.

**Source:** Missouri History Museum.

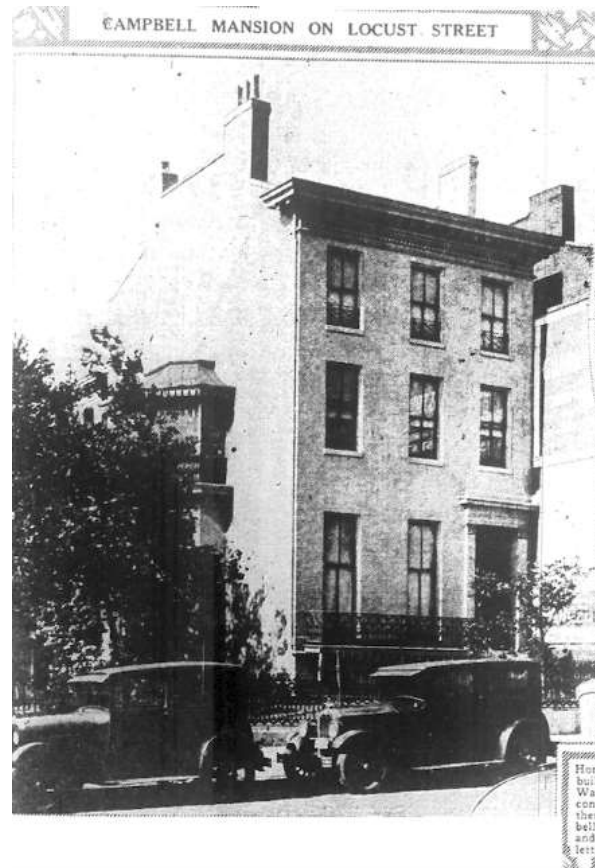




**Left:** City officials survey Mill Creek Valley before clearance (1956). Former Mill Creek Valley site in 2001. **Sources:** *St. Louis Post-Dispatch*; Missouri Historical Society.

**Above:** DeSoto-Carr neighborhood during clearance in 1952. **Source:** State Historical Society of Missouri.





## Group Seeking Way to Keep Old Campbell House Intact

Furnishings Scheduled to Go on Auction Block, but Effort May Be Made to Preserve Them.

Efforts to save the old Campbell house at 1508 Locust street are being made by a group of citizens interested in preserving the city's historic places. It is estimated that the furnishings of the house are worth \$100,000.

The furnishings of the house are scheduled to go on the auction block at the auctioneers, 1138 Olive street, Tuesday at 10 and 20. Deemorable of the house is what Hugh Campbell, who the furnishings of the house and his personal effects have ordered the sale.

The old house, which was one of the finest in Lucas place, the city's most fashionable residential section in the post-Civil War period, is filled with the finest furniture and art & gemstones of rare and unique value.

In Excellent Condition.

Hugh Campbell, president of the group of 20 Locust and tried to persuade the city to buy the house to be used as a museum.



The old Campbell house at 1508 Locust street.

Home at No. 1508 built before the Civil War and occupied continuously since then by Hugh Campbell, who died Sunday, and his brother, Harry.

**Left to right:** c.1930 photo of cleared riverfront; 1931 *St. Louis Post-Dispatch* article about “Campbell Mansion on Locust Street”; 1941 *St. Louis Star-Times* article announcing “Save the Campbell House” campaign.

**Sources:** Missouri Historical Society; Campbell House Museum collection.



**Left:** Circa-1935 photograph of the Campbell home. **Right:** 1942 *St. Louis Globe-Democrat* advertisement celebrating the “gift” of house to the city by owners of the Stix, Baer & Fuller department store.

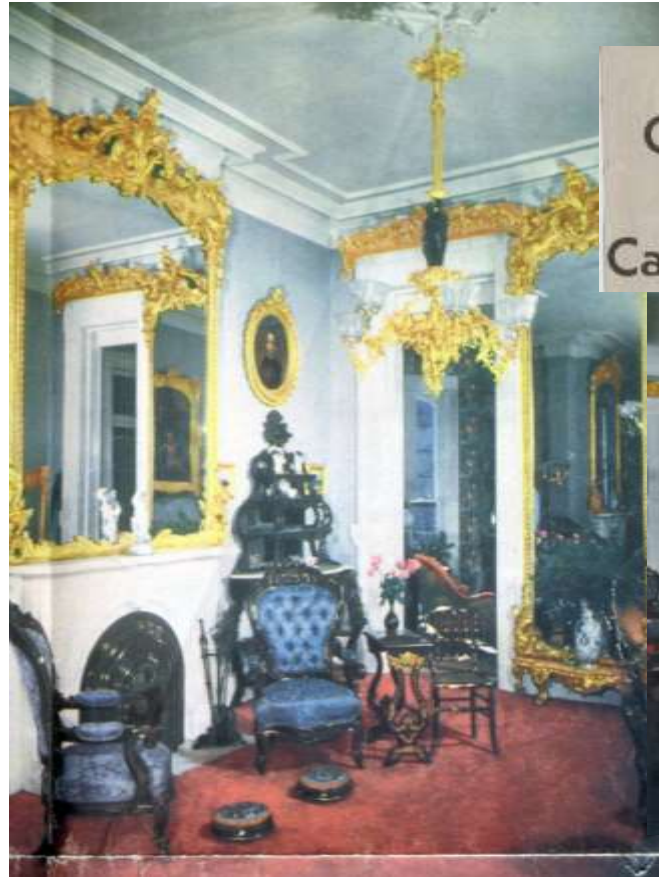
**Source:** Campbell House Museum collection.





**Left:** *View of St. Louis, From Lucas Place.* 1865, lithograph. E. Sachse & Co, Baltimore, Maryland.  
**Right:** Unknown, *VIEW ON LUCAS PLACE.* 1865, engraving. **Source:** Campbell House Museum Collection.





The  
Color Camera  
At the  
Campbell House



**Left:** Early photos of the “Robert Campbell House” right after museum opened in 1943, *St. Louis Post-Dispatch*. **Right:** Campbell House parlor in 1938. **Source:** Campbell House Museum Collection.





*The City of St. Louis, Sketched and drawn on stone by Parsons & Atwater (Currier & Ives), 1869.*

**Source:** Library of Congress



# Old Campbell Residence, Reopened After 50 Years, Relic of Vanished Past

Pictures on Page 13.

in 1879. His two sons, Hugh and Hazlett, soon afterward withdrew



## Dead Millionaire and Downtown Home



## HUGH CAMPBELL DIES AT 83 IN DOWNTOWN HOME

Millionaire Bachelor Long  
Occupied Residence at  
1508 Locust Refusing All  
Offers to Sell.

## INVALID BROTHER HAZLETT SURVIVES

Funeral Tomorrow at Sec-  
ond Presbyterian Church  
Which Campbells Attend-  
ed Many Years.



HUGH CAMPBELL.  
From an old photograph.

and Lucas place, the Campbells, of Scotch Presbyterian ancestry, attended it. The funeral of Hugh Campbell will be held at 10 a. m. tomorrow in the chapel of Second Church, now at Taylor avenue and Westminister place. Interment will be private. Since he was disabled by an injury to his hip, six years ago, Hugh Campbell had been a recluse in the old house. Before that time he was seen often in the neighborhood — a distinguished figure, tall and

## LIFE OF ROBERT CAMPBELL TYPICAL OF WEST'S PIONEERS

Disposition of Hugh's Estate Would Have  
Pleased Him for He Favored Education

The decision of Circuit Judge Kirkwood last week, holding valid the bequest of the late Hugh Campbell of virtually his entire estate of \$1,200,000 to Yale University closed one chapter in the romantic story of the Robert Campbell fortune in a way that would have greatly pleased the man who founded it when he came to St. Louis, penniless and an invalid, 115 years ago.

For Robert Campbell believed in education. One of the big factors in his success, one of the ties which bound so closely to him the "mountain men" the fur trappers and traders with whom his youth had been spent in the Far West when lifelong friendships were founded in perils shared, was his determination, even at personal sacrifice, to help them obtain the advantages of education for their half-breed children.

### AIDED BRIDGER'S DAUGHTER

To him Jim Bridger, most famous of them all, sent his daughter, Virginia, to be educated in the convent at St. Charles, and his son Felix also for schooling there, after their elder sister, Mary Ann, had lost her life in the Whitman massacre at Wallatpu in 1847. To him Thomas Fitzpatrick—"Broken Hand" the Indians called him—sent Felix the Indian wife he had found

## Campbell Estate Claims Filed

\$2,000,000 Involved  
in Inventory Offered  
in Probate Court

An inventory of the estate of Hazlett Kyle Campbell, setting forth claims for about \$2,000,000, was filed yesterday in Probate Court by Public Administrator Thomas R. Madden, who now is administering Mr. Campbell's personal estate, which has been valued at \$1,350,000.

The inventory lists four claims, the value of which Madden says he is unable to estimate at this time. Hazlett Campbell died in March, 1938.

### INVOLVES TRUST DEED

The first of the claims is for the nearly \$2,000,000 involved in the litigation in which Mr. Campbell's trustees are seeking to determine the heirs-at-law in Circuit Court.

The claim is based on a trust deed executed in February, 1837, by Robert and Virginia J. Campbell. In this connection, Madden contends, the trustees and Hugh Campbell Jr., in 1855, in attempting to exercise powers given to them in the trust deed directed that, upon Hazlett Campbell's death, his property should be distributed to his heirs-at-law at the time of his death. This attempted appointment, he says, is in violation of the provisions of the deed.

### SEEKS SUPPORT EXPENSES

## PIONEER



The Campbell home at 1508 Locust street, as it appears today.

# 'The Locust Street Campbells' —INDIAN FIGHTER to FORTUNE to the COURTS

Newspaper coverage of "Locust Street Campbells" (court case, 1939) and "opening" of the house (1941) from *St. Louis Globe-Democrat*, *Post-Dispatch* and *Star-Times*. Source: Campbell House Collection.



*from Mr. Nagel 2/1/44*

PUBLIC PREVIEW  
*Saturday and Sunday, February 22d and 23d*  
 From 2:00 until 8:00 p. m.

TRADITIONAL AMERICANA  
 ENGLISH FURNITURE and OBJETS D'ART  
 SUPERIOR ORIENTAL and CONTINENTAL PROPERTIES

Removed from  
*Prominent Civil War Residence*  
 Belonging to Estate of the Late  
**HUGH CAMPBELL**

Under Auspices of  
 ISAAC C. ORR and OTEY McCLELLAN  
 Counselors for Heirs

*Together with Selections from Private Consignors*

To Be Dispersed at Public Sale During Five Galleries Sessions  
*Beginning*  
 Monday Evening, February 24th, at 8:00 o'Clock  
*Continuing Thereafter on*  
 Tuesday and Wednesday, February 25th and 26th  
 Each Afternoon and Evening at 1:00 and 8:00 o'Clock


**BEN J. SELKIRK & SONS**  
 ART DISPERSAL GALLERIES  
 St. Louis, Missouri  
 1941



THIS traditional mid-Victorian CAMPBELL MANSION, situated at 17th and Locust Streets, St. Louis, Missouri, represents the fine heritage of many such residences which composed St. Louis' distinguished and exclusive "Locust Place" of substantially a century ago. The home was established by ROBERT CAMPBELL, father of the late HENRI CAMPBELL, who upon his death in 1931 bequeathed the same, with other valuable considerations, to Yale University.

The residence was built and furnished in greater part during the controversial pre-Civil War days contemporaneous with Stephen A. Douglas' Nebraska-Kansas Bill repealing the Missouri Compromise, slightly prior to the election of Abraham Lincoln as the sixteenth President of the United States—that is to say, about the time the Dred Scott Slavery Case came to the attention of the United States Supreme Court on appeal from the United States Circuit Court of Missouri.

ROBERT CAMPBELL was a resourceful pioneer in the early fur trade of our country, an intrepid explorer and fearless Indian fighter. His exploits contributed much subject matter for Washington Irving's writings on early western United States. He was a member of the firm of SUBLETTE & CAMPBELL, extensive dealers in Indian furs and army goods, figuring prominently in the pioneering days of St. Louis' great Western trade.

JEfferson 1700  St. Louis, Mo., Feb. 24 1941

Mr. J. P. Henry, Chairman Campbell House Committee  
 375 N. Taylor BOUGHT OF  
**BEN J. SELKIRK and SONS**  
*Art Dispersal Galleries*  
 Four One Six Six Olive Street  
 At Whittier Auctioneers  
 Appraisers

Terms Cash

CATALOGUE NUMBER	PURCHASE	PRICE	TOTAL
1*	pr antique American carved bois-de-rose and satin damask fauteuils	100.	200 00
P 9*	pr antique American gilded black lacquer "Fancy" chairs	20.	40 00
L 12	Antique American ebonized walnut and marquetry easel		10 00
13*	Antique American carved rosewood and satin damask settee		150 00
15*	Antique American victorian bois-de-rose and satin damask settee		165 00
P 16*	Antique rose-carved American bois-de-rose "Square" piano		100 00
P 19 (4)	Antique American gilded and lacquered nested "Fancy" tables	47.50	95 00
P 20*	Antique American carved bois-de-rose etagere		100 00
			860 00

Cover and frontispiece from *Dispersal Resume* (catalog) and invoice for auction purchases made by the William Clark Society in February, 1941. Source: Campbell House Museum Collection.



Tweets 3,878 Following 666 Followers 1,500 Likes 527 Lists 1

Follow

### Campbell House

@campbellmuseum

Official Twitter feed for the Campbell House Museum. City Living Since 1851.

St. Louis, Missouri

[campbellhousemuseum.org](http://campbellhousemuseum.org)

Joined May 2010

Tweets Tweets & replies Media

Campbell House Retweeted



**cassilly crew** @cassillycrew · Oct 18

If you haven't checked this out I recommend doing so. Help support a cool downtown institution and learn stuff at the same time!



**Campbell House** @campbellmuseum

For the remainder of the month, the parlor inside the Campbell House will be in proper Victorian mourning decor. Guests will be able to see Robert Campbell's 1879 wake in the parlor & hear about the Victorian tradition...

Show this thread

1 2 6



Want to take advantage of all the new Twitter features?

It's simple – just log in.

Log in

Sign up





Front and east facades of house during restoration, circa 2001.

**Source:** Campbell House Museum Collection.





Circa-1885 photographs of interiors of the Campbell residence. **Source:** Campbell House Museum collection.



Artifacts from the Campbell House collection. **Source:** Campbell House Museum collection.





**Left:** Circa-1935 photograph of Campbell House facade.  
**Right:** 1920s photo of Locust Ave. looking east from 15<sup>th</sup> Street.  
**Source:** Campbell House Museum collection.



**Modern memory is, above all, archival.** It relies entirely on the materiality of the trace, the immediacy of the recording, the visibility of the image...

The less memory is experienced from the inside the more it exists only through its exterior scaffolding and outward signs—hence **the obsession with the archive that marks our age**, attempting at once **the complete conservation of the present as well as the total preservation of the past**. Fear of a rapid and final disappearance combines with anxiety about the meaning of the present and uncertainty about the future to give even the most humble testimony, the most modest vestige, **the potential dignity of the memorable...**

-- P. Nora, "Between Memory and History: Les Lieux de Mémoire (*Representations*, 1989)



**THE CAMPBELL HOUSE  
 FOUNDATION**  
*Temporary Quarters • Room 203 DeSoto Hotel*  
**SAINT LOUIS, MISSOURI**



May 5, 1941

*“Save the Campbell House”*

OFFICERS

•  
 OSSE P. HENRY  
 St. Louis Art Museum  
*President*

GRACE ASHLEY  
*Vice-President*

WILLIAM T. RATHBONE\*  
 St. Louis Art Museum  
*Secretary*

CHARLES NAGEL JR.  
*Treasurer*

BOARD MEMBERS

•  
 WILLIAM D. BECKER\*

War with its terrible destruction is wiping out the landmarks of Europe! We are powerless to stop this, but we can help preserve the historic points of interest in Saint Louis.

Symbolical of what Saint Louisans want to preserve is the home of Robert Campbell, pioneer citizen and fur trader. This is proved by the spontaneous and voluntary public contribution of over \$8,000.00 to secure the Victorian furnishings which so vividly reflect the life of Saint Louis in the 'fifties.

May 1941 Campbell House Foundation fundraising letter.  
**Source:** Campbell House Museum collection.

---

---

# TAKING POSSESSION

---

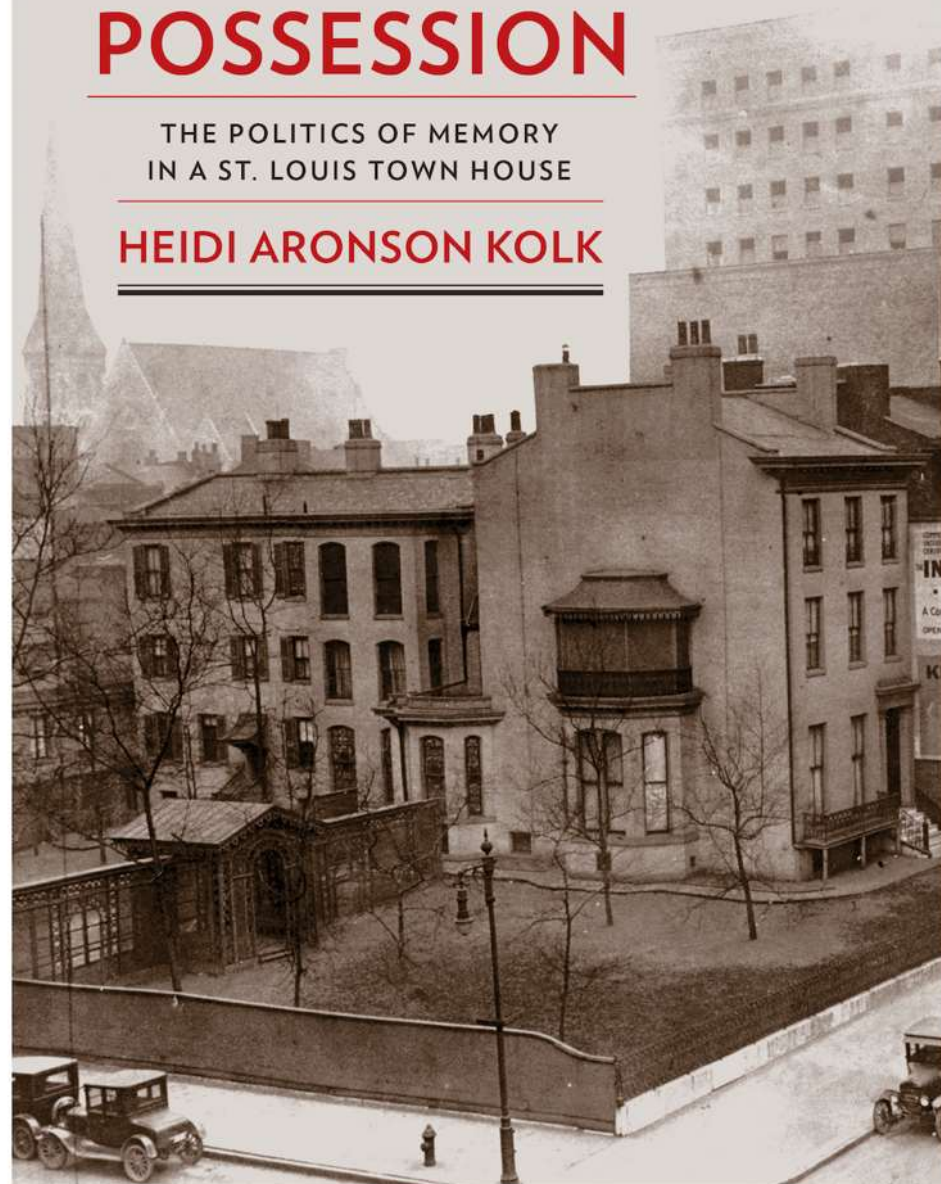
THE POLITICS OF MEMORY  
IN A ST. LOUIS TOWN HOUSE

---

HEIDI ARONSON KOLK

---

---







**Left:** Google Earth image, “City Eyes Pruitt-Igoe for 3,000 National Geospatial-Intelligence Agency Jobs” (nextSTL.com). **Right:** 2015 aerial photo of NGA tract as seen from the northwest (*St. Louis Post-Dispatch*).





# Moving Forward

Concept Artwork Reveals Next NGA West Campus Design

READ THE MEDIA RELEASE >

Concept drawings for new NGA West campus, NGA website, <http://nextngawest.com/>.





Demolition of houses in the NGA redevelopment zone taken in May 2017. **Source:** *St. Louis Business Journal*



Taylor-Brown residence before relocation, 2530. N. Market St.  
**Source:** Next NGA West History Project, City of St. Louis, [stlouis-mo.gov](http://stlouis-mo.gov)





 **Jeremy Kohler**   
@jeremykohler 

House is making a 90-degree pivot at 22nd street. Incredible.

👍 9 3:10 PM · Feb 26, 2017 · St Louis, MO

[See Jeremy Kohler's other Tweets](#) 



Media coverage of Taylor-Brown house relocation, Feb. 2017  
**Sources:** Next NGA West History Project, City of St. Louis, stlouis-mo.gov (left) David Carson, *St. Louis Dispatch* (right)



**St. Louis Wins!**

**Selected For New Western  
NGA Headquarters**

**Largest Federal Investment  
In The History Of The  
City Of St. Louis**

**North St. Louis selected as preferred site for the new  
\$1.7 billion western headquarters of the National  
Geospatial Intelligence Agency!**

Preliminary preferred site for new NGA-West HQ in

(At Left) Demolition of the old Pruitt-Igoe Housing Project in 1972.

Washington, D.C. Office  
2428 Rayburn House Office Building  
Washington, D.C. 20515

Official Business.  
This mailing was prepared, published, and mailed at taxpayer expense.



*Wm. Lacy Clay*  
M.C.  
PRSR  
ECRW



“St. Louis Wins!” mailer circulated to 1<sup>st</sup> District voters by William Lacy Clay (D-MO) celebrating the selection of North St. Louis site for NGA West. **Source:** Author’s collection





Grace Baptist Church and soon-to-be-demolished homes in the NGA re-development site in March 2017. **Source:** author's collection.



Campbell family residence and Locust Avenue streetscape, circa 1931.

**Source:** Campbell House Museum Collection





*The*  
**CAMPBELL HOUSE**

*A Romantic Survival  
of  
Early St. Louis*

*A description of the museum  
and its contents*



Photo and cover of *The Campbell House: A Romantic Survival of Early St. Louis* (early museum pamphlet, 1949). **Source:** Campbell House Museum Collection



## Welcome to our Online Collections Database!

### Tips for Searching

#### Keyword Search

The **Keyword Search** button allows you to perform a general search across multiple fields for a connector between words (e.g. a search for *Harley Ranch* will return records associated with *Harley* found, type in AND between the two words. To search for a specific phrase, be sure to put the phrase in quotes. To search for a specific word, use the asterisk (\*) as a wildcard (e.g. a search for *histor\** would come up with records containing *history*, *historical*, *historian*, etc.).

#### Advanced Search

The **Advanced Search** button can help you be more specific with your search. You can search categories to further narrow down your search results. For example, searching *White* in the People family, without having to sift through black & white photographs. You can also search People and use of wildcards (\*) are available in Advanced Search.

#### Random Images

The **Random Images** button is a great way to just browse the collection. Each Random Images page displays a random assortment of images from the records online. If something piques your interest, click the thumbnail to view a larger version of the image.

#### Catalog Searches (Archives / Photos / Libraries / Objects)

The catalog buttons can also help narrow down your search, by only searching with a selected catalog. If you only want to search for Photos, click the **Photos** button and type in your keyword(s) or phrase. You can also browse records within that catalog without performing a search. Phrase searching, wildcards (\*) as well as AND/OR statements are available when performing catalog searches.

## CAMPBELL HOUSE MUSEUM *city living since 1851* COLLECTIONS & ARCHIVE SEARCH

HOME KEYWORD SEARCH ADVANCED SEARCH RANDOM IMAGES ARCHIVES PHOTOS LIBRARIES OBJECTS

### Object Record

[Return To Search Results](#)

Email to a Friend

Send Us Feedback



Object Name	Pitcher, Cream
Description	<p>A pyriform shape with gold, high-relief scrolls on the rim, foot and handle; wide spout gold at the edges. Red color, with white reserve enclosing a floral nosegay overglaze enamel painting.</p> <p>This set is an imitation Rockingham. Firstly, the entire set lacks a clear maker's mark. Rockingham used a very distinct mark on all of their products. Secondly, Rockingham went out of business in 1842, a date that does not coincide with the estimated purchase period for this set. There were a few potters who would 'copy' or 'forge' Rockingham porcelain, but they used very distinct marks as well (Samson is the most noted of these imitators).</p> <p>*O* incised into the bottom.</p>



## Some limitations and biases:

1. The **romance** of the site's **exceptionalism**
2. The **privileging** of **narratives of single-family ownership and private property**;
3. The concern with the Campbells' **accumulation of wealth and power**;
4. The **fetishizing of certain artifacts**, and a **preoccupation** with **objects as personal possessions**;
5. Strong investment in institutional **claims of ownership and control**;
6. Obsessive concern with **intactness**.



School groups involved in site- and object-based educational programs at the Campbell House Museum. **Source:** Campbell House Museum Collection





**Gas Chandelier**

*(Gasolier, one of pair)*

*Circa 1855*

*America*

*Bronze, spelter, glass globes: 63 inches tall*

*Campbell House Museum*

**Descriptive Detail**

Embellished with swirling designs and allegorical figures, this elaborate six-arm bronze chandelier is one of a pair that hangs from the parlor ceiling in the Campbell House. Delicate fluted and acid-etched glass shades sit on each arm of the fixture. A leaf pattern in the Aesthetic Style surrounds the upper portion of each globe—the lower section is frosted glass. These fragile globes

may have originally graced the fixture.

The fixture, now electric, was powered with gas when installed. Made of gilded bronze and iron, mermaids, lizards, mice, eagles, winged griffins, and grotesque faces almost play hide-and-seek within the elaborate embellishments. The Victorian style, named after Queen Victoria who ruled in England from 1837-1901, incorporated a variety of artistic movements including the Neo-Gothic and the Aesthetic Movement and also borrowed from a rich array of visual periods and sources. Nature was a popular motif that focused on an appreciation of natural forms and the senses—it is evident in the fixture's entwining vines and acanthus leaves. Most notable are the three figures dressed in Greek-inspired costumes that surround and rise above the central shaft of the fixture. They are cast in a metal alloy, spelter, and have a dark patina.

**Local Historical Connections**

CAMPBELL HOUSE MUSEUM

CONTACT US

The Campbell House Museum  
1508 Locust Street  
St. Louis, MO 63103 | 314-421-0325



**Coat**

*Circa 1840*

*America*

*Hide, cotton, glass beads, sinew, quill: 45 inches long*

*Campbell House Museum*

**Descriptive Detail**

Small by today's standards and cut like a gentleman's frock coat from the 1830s or 1840s, this beautiful garment is hand-made of brain-cured elk hide and sewn with sinew. The upper body of the coat is constructed of five pieces, three of which form the back with two curved seams running from shoulder to near the back center of the waist. Each sleeve is cut from two curving pieces. Piecing the parts of the coat uses the hides more efficiently and makes the coat more flexible. The seams along the sleeves, shoulder, and across the back of the coat are fringed with long strips of hide. Fringe also decorates the hem. The embellishment is made primarily of

CAMPBELL HOUSE MUSEUM

CONTACT US

The Campbell House Museum  
1508 Locust Street  
St. Louis, MO 63103 | 314-421-0325





Campbell family residence and Locust Avenue streetscape, circa 1931.  
**Source:** Campbell House Museum Collection







## THE URBAN MUSEUM COLLABORATIVE

*...More than bricks and mortar, containers of memory, the keepers of our stories, touchstones of our common humanity—places rooted in time but alive within the complex vibrant landscape of today—a museum without walls in our midst...*

Established in 2009, the Urban Museum Collaborative brings together three small, innovative museums in downtown St. Louis—the *Campbell House Museum*, *The Eugene Field House Museum*, and *The Griot Museum of Black History*. The evocative collections and the stories contained within illuminate the complex narrative of urban life in 19th-century St. Louis—a history that resonates in our lives today. These fascinating and sometimes heart-wrenching narratives come alive through interconnected site-based programs, educational resources, tours, and community events. Teachers, students, and visitors of all ages become engaged in “museum without walls” discovering a new landscape in a changed and changing city.

Explore the Artifacts



©2010 Urban Museum Collaborative



Urban Museum Collaborative website, <http://www.urbanmuseumcollaborative.org/index.html>



Campbell family residence and Locust Avenue streetscape, circa 1931.

**Source:** Campbell House Museum Collection

## INSTEAD, ATTEND TO:

- Efforts at protection and patterns of destruction
- Multiple / evolving paradigms of ownership
- Multiple contexts: the street, the neighborhood, the evolving downtown, the broader landscape of the city
- Object ecologies within the house (including links to objects outside the house)
- The house's relationships to "dark twin" sites, and to the unseen





Campbell family residence and Locust Avenue streetscape, circa 1931.

**Source:** Campbell House Museum Collection

## WHAT WOULD IT LOOK LIKE TO...

- Have a more open conception of ownership
- Break down **?** barriers between Campbell-related archives, and between parts of the museum collection
- Make the invisible more visible in museum education and website
- Develop object records that capture multiple / complex relationships and contexts
- Document erasures and losses



*Thank you for  
listening!*

hkolk@wustl.edu