

Samvera Development On... The Oregon Trail



Contact:
Franny Gaede - Head, Digital Scholarship Services -
mfgaede@uoregon.edu



Contact:
Margaret Mellinger - Head, Emerging Technologies and Services -
margaret.mellinger@oregonstate.edu

Overview

You may:

1. Talk about Controlled Vocabulary Manager & Opaque Namespace.org
2. Explore Oregon Digital
3. Size up ScholarsArchive@OSU

What is your choice? _

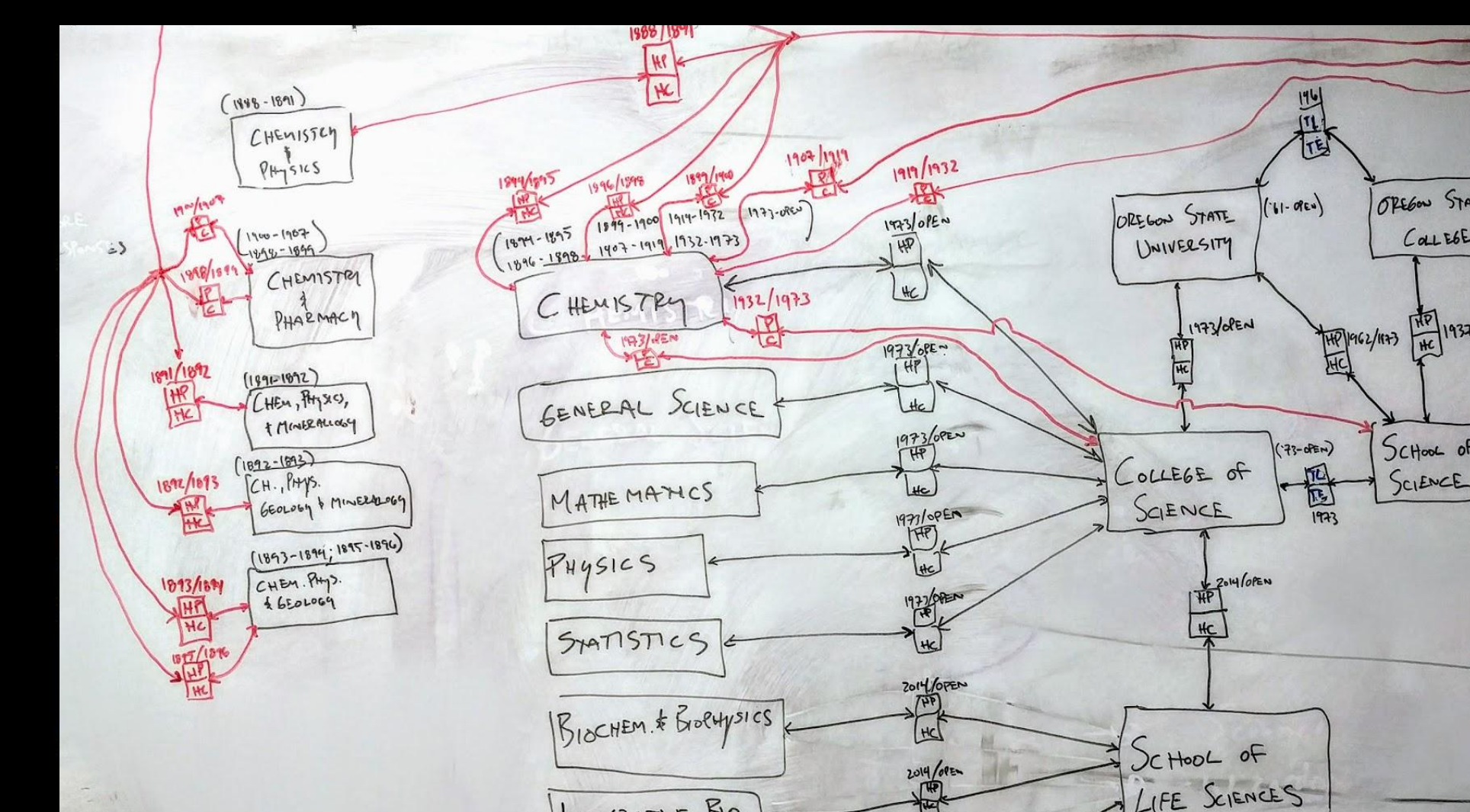
1. Controlled Vocabulary Manager & OpaqueNamespace.org

CVM powers opaquenspace.org, providing a linked data service with persistent URIs for predicates and objects.

Vocabulary	Content	Number of Records
Campus Buildings	Current and historic buildings on the OSU campuses	182
Academic Units	OSU departments, colleges, and university names and time spans from 1895 to present	515
Name Authorities	Creator, People, and Subject vocabularies	24474
Academic Degree Fields	Fields of study for Theses and Dissertations in ScholarsArchive@OSU since 1895	313

Example Application of CVM and ONS - **Historic Academic Units:**

Academic units from the university down to the department level have **changed names hundreds of times since 1895**. To meet our need for robust reporting, we have built a controlled vocabulary in ONS of all 515 academic units at OSU that we will be linking to allow tracking of name changes across the lifespan of the content in the repository.



Modeling Academic Units

Press SPACE BAR to continue

2. Oregon Digital

Overview of Oregon Digital

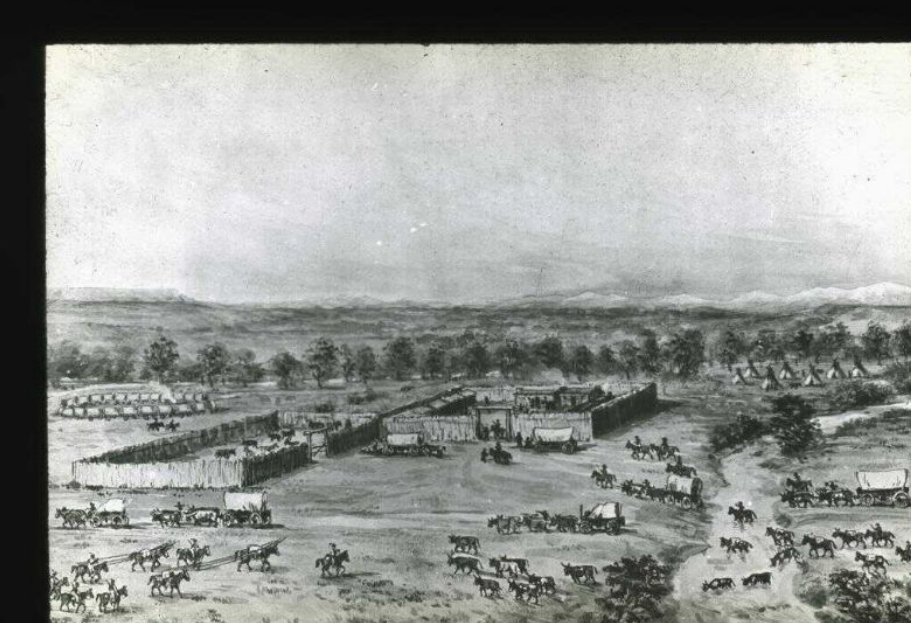
The **University of Oregon (UO)** Libraries and **Oregon State University (OSU)** Libraries and Press have been successfully collaborating on the digital asset management systems (DAMS) dubbed **Oregon Digital** (oregondigital.org) since 2009. The Oregon Digital repository holds diverse collections of digital archival materials from art slides to audio interviews and includes both digitized and born-digital archival collections. In addition, we host unique collections from local government, historical societies, and museums.

Oregon Digital selected Hydra in fall 2012 as our next generation DAMS, and development on a prototype began in winter 2013. The prototype was approved and permission to proceed was granted in late summer 2013. Both institutions joined as Hydra partners in spring 2014. Migration was completed in August 2015 and development and metadata enhancement continues on.

Planned Migration - Oregon Digital 2

The Oregon Digital team has been planning the build of **Oregon Digital 2** for a few years and has initiated the planning process, with development and migration taking place in 2017-2018. Key among the features required for Oregon Digital 2 are:

- Hyrax at the core
- Linked data support
- Bulk ingest, edit, export
- Collection Extensions
- Flexible viewers and IIIF integration



3. ScholarsArchive@OSU

Overview of ScholarsArchive@OSU

Until **next week**, ScholarsArchive@OSU is OSU's DSpace-based institutional repository, holding a variety of scholarly content produced by students, faculty, and staff at OSU. Key among these collections are the complete run of Graduate Theses and Dissertations, Extension and Experiment Publications, and articles complying with OSU's Open Access Policy.

Repository Requirements

1. Compound object support
2. Flexible metadata
3. Analytics dashboards and reporting tools
4. Author profiles



Which item would you like to buy? _

Migration Tooling - DSpace2Hydra:

- Uses Hyrax HTTP API
- Process exported BAGs from DSpace
- Fix & Augment metadata during crosswalk
- Migrated >60k works

Community Efforts

- Initial implementation of PCDM in Hyrax
- Contributions to workflow development efforts
- Coordination of Analytics working group

Customizations

- Linked data implementation for local vocabularies
- UI tweaks for
 - Embargoes
 - date fields
 - academic degrees
 - academic units

DSpace has died of Data Migration

Press ENTER to size up the situation

Date: Spring 2017
Number of Items: 60,000
Metadata Quality: Medium
Time Taken: 6-8 weeks

Press SPACE BAR to continue

Press SPACE BAR to continue working with:

University of Oregon: Duncan Barth, Jeremy Echols, Franny Gaede, David McCallum, Linda Sato, Sarah Seymore, Julia Simic

Oregon State University: Michael Boock, Erin Clark, Josh Gum, Clara Llebot, Margaret Mellinger, Ryan Ordway, Greg Luis Ramirez, Brandon Straley, Steve Van Tuyl, Ryan Wick, Hui Zhang

