

Hyku Update

Fall 2020 Samvera Partner Meeting
Thursday October 15, 2020

Kevin Kochanski, Notch8
kevin@notch8.com



The background features a dark blue-grey gradient. On the left side, there are several overlapping, angular shapes in shades of orange and yellow, creating a dynamic, layered effect. The text 'General Updates' is centered in a bold, yellow, serif font.

General Updates

Hyku 3.0

- ▶ Bump to Hyrax 2.9, Rails 5.2, Ruby 2.7
- ▶ Bulkrax import/export is behind a feature flipper to turn on or off on a per-tenant level
- ▶ Contact Us email is customizable at tenant level
- ▶ User management elevation
 - ▷ Super-admin cross-tenant user management
 - ▷ Allows for SSO

Hyku 3.0

- ▶ Current issue block:
 - ▷ Cross-tenant permissions on institution-only items
 - ▷ The base permissions it gives you are not correct when you switch tenants
 - ▷ Should not be a huge issue as most people won't be hopping tenants unless they're meant to have access anyway, but is unintended and a risk
- ▶ Expect resolution and 3.0 release before December.

Hyku Interest Group

Pilot Updates

PALNI/PALCI
Hyku for
Consortia
Advancing Hyku
British Library
WUSTL Newman
Numismatic
Portal
DOT's National
Transportation
Library

Roadmap

Align project
efforts and
formalize
features for
inclusion in the
Hyku Roadmap

Release Updates

Notes and issues
with coming
releases

Newcomers

A place where
those new to
Hyku or those
exploring
solutions can get
news and ask
questions

Meeting

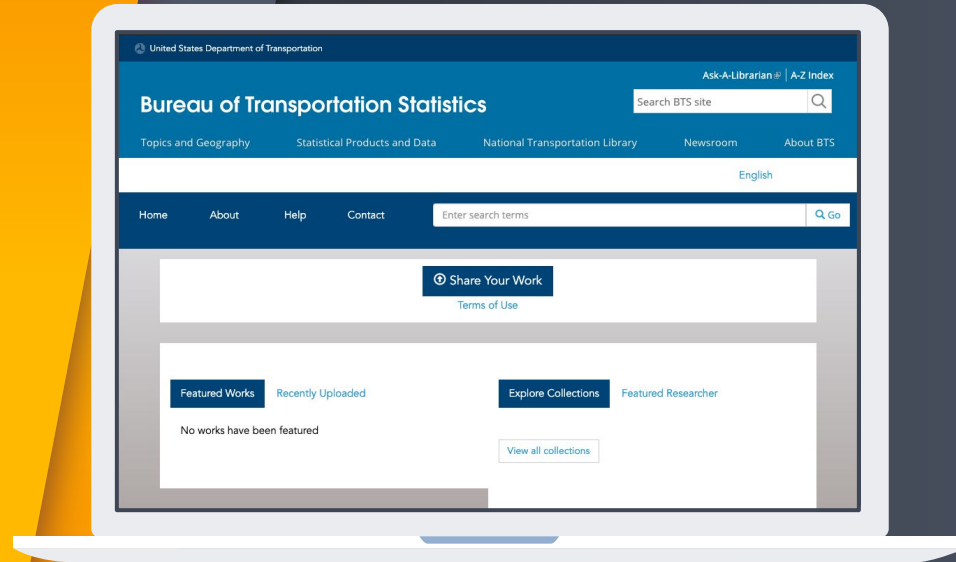
On Zoom, the
last Thursday of
each month

The background features a dark blue field on the right and a series of overlapping, angular shapes in shades of orange and yellow on the left. The text is centered in the blue area.

Projects in Development

National Transportation Library 3.0

US Department of
Transportation's
replacement for a legacy
repository.



National Transportation Library

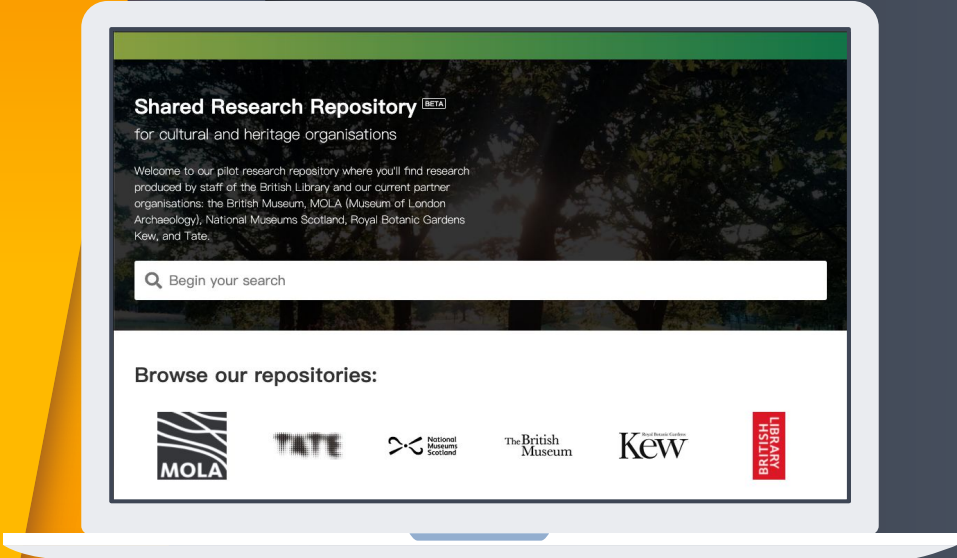
US Department of Transportation

- ▶ Finalizing SSO integration and government security audit
- ▶ Phase One delivery November 2020
- ▶ Introduces the ability to edit controlled vocabulary fields, which will get contributed back
- ▶ Custom, complex mediated deposit workflow

Shared Research Repository

British Library-managed multi-tenant repository for cultural heritage organizations.

iro.bl.uk



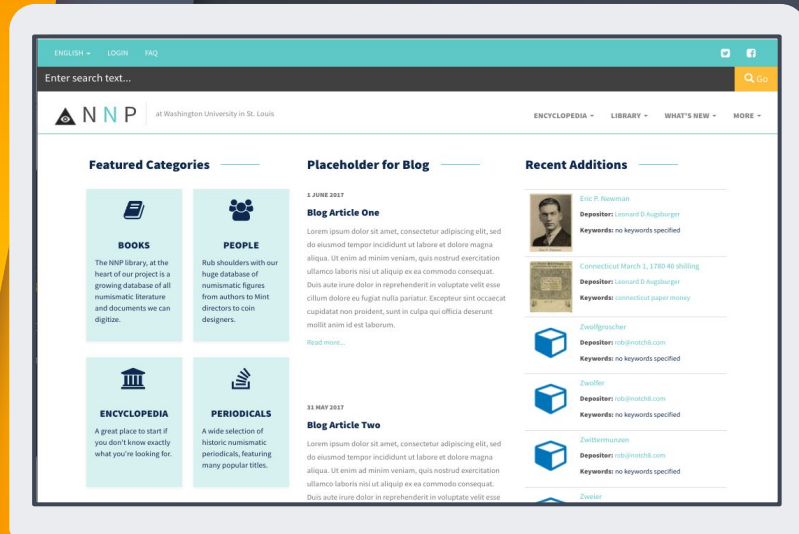
Shared Research Repository

British Library

- ▶ A shared repository of 6 separate tenant repos on a single Hyku instance
- ▶ Features include Datacite integration for DOI creation
- ▶ Not all features will be in Hyku, including the public interface which is bespoke development
- ▶ Successful beta repository planning to move to full shared service for other organisations from Jan 2021.

Newman Numismatic Portal

Moving a WUSTL collection from a legacy .NET application.



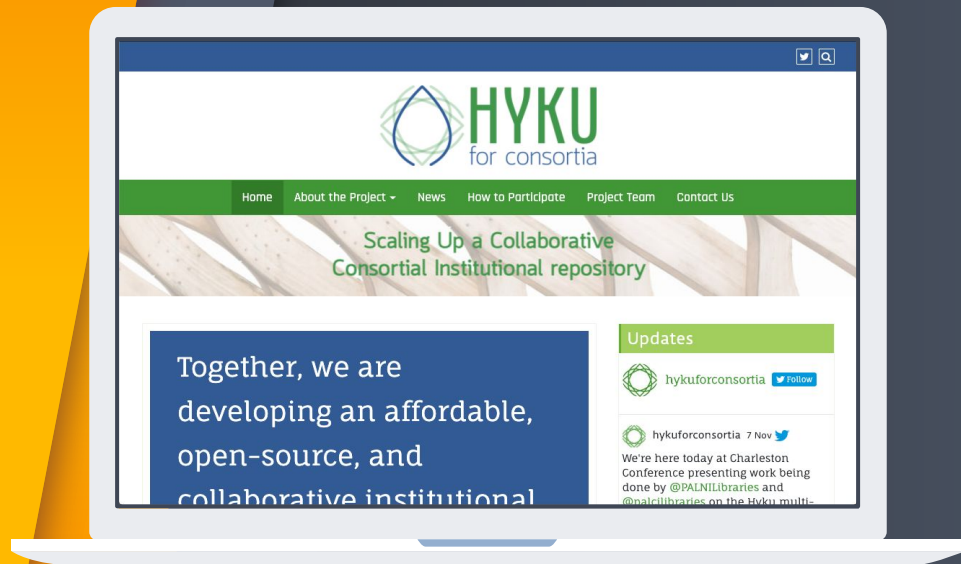
 Washington University in St. Louis
UNIVERSITY LIBRARIES



Newman Numismatic Portal

Washington University in St. Louis

- ▶ Single tenant numismatic special collection
- ▶ Complex metadata relationships beyond parent/child
- ▶ Multiple unique worktypes (auction catalogs, price lists, etc.)
- ▶ IA BookReader for searchable, flippable PDFs with Transcripts



Hyku for Consortia

A collaborative repository for consortial member libraries.

www.hykuforconsortia.org



Hyku for Consortia

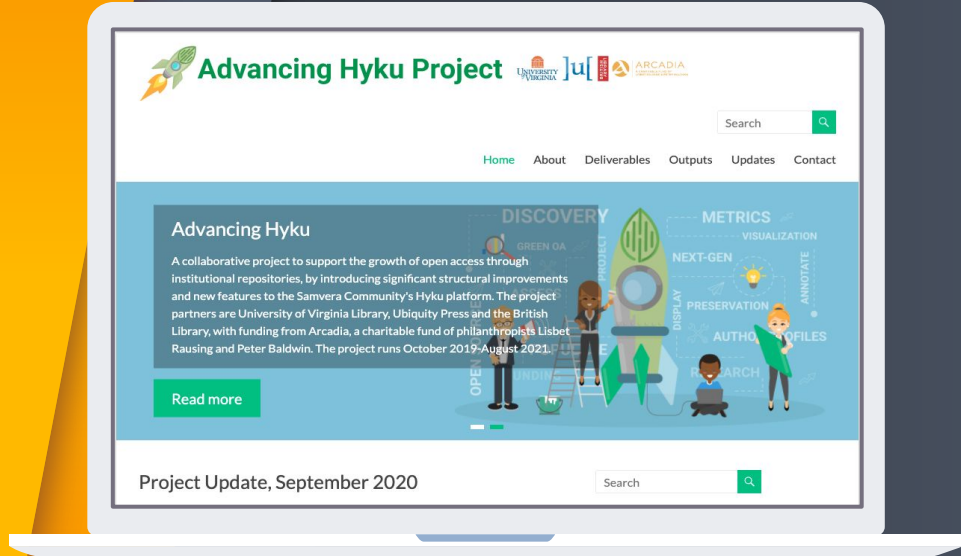
PALNI & PALCI

- ▶ Multi-tenant application in pilot stage across two library consortia
- ▶ Collaborative workflow developments will be contributed back
- ▶ Successfully integrated Bulkrax for bulk import
- ▶ Working on multiple theme templates that will accommodate various repository use cases

Advancing Hyku

Supports the growth of Hyku by introducing significant structural improvements and new features.

advancinghyku.io



A collection of logos for the project partners, arranged in a rounded rectangular frame. On the top left is the Arcadia logo, which includes a stylized 'A' and the text 'ARCADIA A CHARITABLE FUND OF LISBET RAUSING & PETER BALDWIN'. To its right is the British Library logo, consisting of the words 'BRITISH LIBRARY' in white on a red rectangular background. Below these are the University of Virginia Library logo, featuring the text 'UNIVERSITY of VIRGINIA LIBRARY' in a serif font, and the Ubiq Press logo, which includes a stylized 'u' and the text 'ubiquity press open scholarship'.

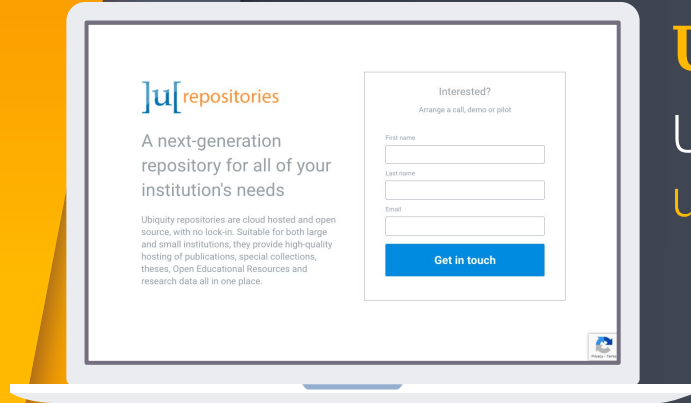
Advancing Hyku

University of Virginia, British Library, Ubiquity Press

- ▶ Currently working on adapting existing HIRMEOS metrics and general Google user analytics
- ▶ Also working on ORCID integration
- ▶ Ilkay Holt joins as project lead for British Library

Arcadia is a charitable fund of philanthropists Lisbet Rausing and Peter Baldwin

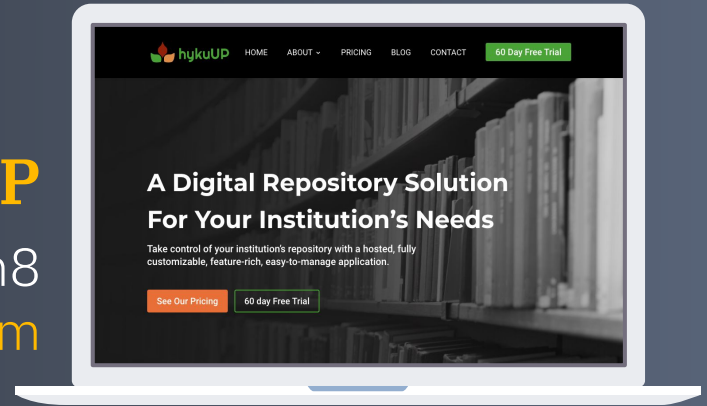
Hyku Hosted Service Solutions



U Repositories

Ubiquity Press
u-repo.io

hykuUP
Notch8
hykuUP.com



The slide features a dark blue background with a large, stylized 'H' shape on the left side. The 'H' is composed of several overlapping geometric shapes in shades of orange and yellow. The text 'Hyku Roadmap' is centered on the right side of the slide in a bold, yellow, serif font.

Hyku Roadmap

Hyku Roadmap

<https://wiki.lyrasis.org/display/samvera/Hyku+Roadmap>

- ▶ Effort to find synergy in multiple concurrent projects
- ▶ Roadmap now a regular topic Hyku Interest Group agenda
 - ▷ Discuss a feature in progress or on a wish-list
 - ▷ Assess broad usefulness and plans to contribute to core
 - ▷ When consensus is reached, add to Roadmap wiki

Hyku Roadmap In Progress

- ▶ DOI Integration
- ▶ Group/permission work
- ▶ Enhanced relationships

Hyku Roadmap

Future Potential Features

- ▶ Theming templates from PALNI/PALCI
- ▶ ORCID integration from Advancing Hyku
- ▶ Controlled fields editor from Dept. of Transportation
- ▶ Automatic expiration of embargoes & leases
- ▶ Cross-tenant search option

Hyku at Connect 2020

- ▶ Keynote: Torsten Reimer, British Library
- ▶ Workshop: Hyrax & Hyku - A Hands-On User Side Intro
- ▶ Presentations:
 - ▷ Supporting Collaboration in Hyku
 - ▷ Ubiquity Repositories
 - ▷ Why Hyku? A Use Case Panel
 - ▷ Your Vote Matters! Advancing Hyku

Follow Hyku!



- ▶ hyku.samvera.org
- ▶ [Slack.samvera.org](https://slack.samvera.org)
- ▶ groups.google.com/forum/#!forum/samvera-hyku
- ▶ Hyku Interest Group
 - ▷ Last Thursday monthly 8:30 Pacific/11:30 Eastern/4:30 UK
 - ▷ <https://wiki.lyrasis.org/display/samvera/Samvera+Hyku+Interest+Group>

Thanks!

Kevin Kochanski

kevin@notch8.com

