

The many ways to use Spotlight

Cathy Aster & Hannah Frost



Stanford LIBRARIES

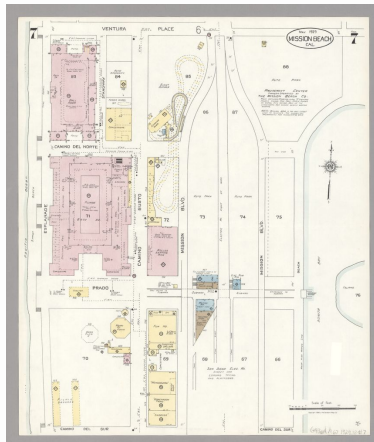
Instructional Aid



- Created in response to instructor and student request for more information about working with digitized maps
- Feature pages explain and demo key concepts to understanding and using maps in instruction and research
- Interactive tests, custom guides and fun graphics create an engaging experience

<https://exhibits.stanford.edu/maps101>

IIIF Utilization



- Utilizes IIIF content from Stanford alongside the Library of Congress to both fill gaps in Stanford's collections and connect content in one place
- A IIIF collections manifest for Library of Congress content was imported into this exhibit; see this [Sanborn Map Example](#)
- Provides a comprehensive viewing and research experience for users

<https://exhibits.stanford.edu/sanborn-maps>

Catalog Raisonné



- Platform to host a free version of a typical print genre that can be very expensive
- Flexible even after publication - changes can be made as new artworks and new bibliographic data are discovered
- Supports further in-depth research by scholars around the world

<https://exhibits.stanford.edu/martin-wong>



Spotlight is an application for showcasing digital content in easy-to-produce exhibits. With a locally hosted instance, Spotlight users can quickly build their own online exhibits featuring digital content, either stored locally or in their own institutional repository without having to develop their own project interface or use a proprietary system.

We've highlighted a few exemplars of the diverse uses of Spotlight, but we find our colleagues coming up with new ideas constantly. Using a single platform for bringing attention to a library unit, initiative, collection, project, conference, or to aid in classroom instruction – goes a long way in maximizing limited technical support resources. How would you use Spotlight at your institution?

Plug in to the [Spotlight Community](#) for more information.

Thank you to the Spotlight at Stanford service team and the dozens of exhibit creators at Stanford and beyond for their advocacy and creative uses of Spotlight.

Documenting Activism & Social Justice Movements



- Useful for assembling materials quickly and efficiently, helping scholars and activists document their work in close to real time
- Scholars and librarians can work with communities directly to document, share and encourage dialog about injustices and critical conversations
- Uplifts stories so that "discussions can take place, questions can be raised, solutions debated, and most importantly that the individuals...are not forgotten."

<https://exhibits.stanford.edu/saytheirnames>

Multilingual



- Exhibit-building interface supports the easy addition of translated narrative content provided by exhibit creators
- Spotlight supports 11 languages including English
- This exhibit is Chinese-English, although Spotlight supports the creation of an exhibit in multiple languages if desired

<https://exhibits.stanford.edu/paci>

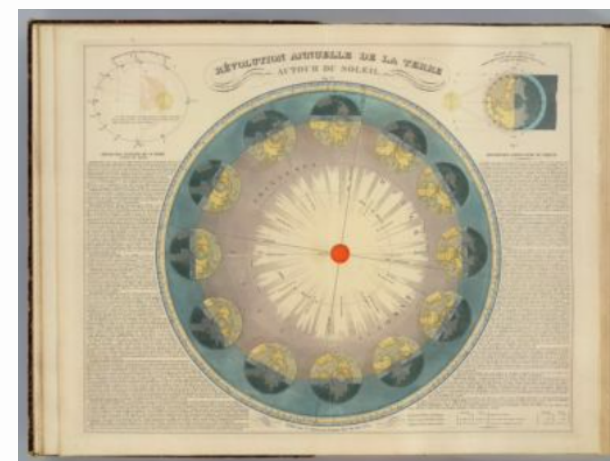
Gathering Place



- Platform for assembling dispersed online content
- Facilitates easy entry point and straightforward discovery
- Showcases research from across the university in one place

<https://exhibits.stanford.edu/data>

Physical Exhibit Companion



- Digital companion to an exhibit of physical objects
- Each feature page shows images of items in an exhibit case, with accompanying descriptions
- Visual and textual record of the exhibit will persist long after physical items are removed from the exhibit space

<https://exhibits.stanford.edu/david-rumsey-map-collection>

Standalone Website Migration



- Standalone website necessitated migration due to security vulnerabilities
- All core website features are accommodated by Spotlight, with minimal compromises
- Migrated website is now hosted as a Spotlight exhibit, a regularly maintained and sustainable platform featuring a wide variety of repository content

<https://exhibits.stanford.edu/bassi-veratti>